



ROAD CONSTRUCTION INC.

[www.imfaltyol.com](http://www.imfaltyol.com)



## About Us

### IMFALT ROAD CONSTRUCTION AND TRADE INC.

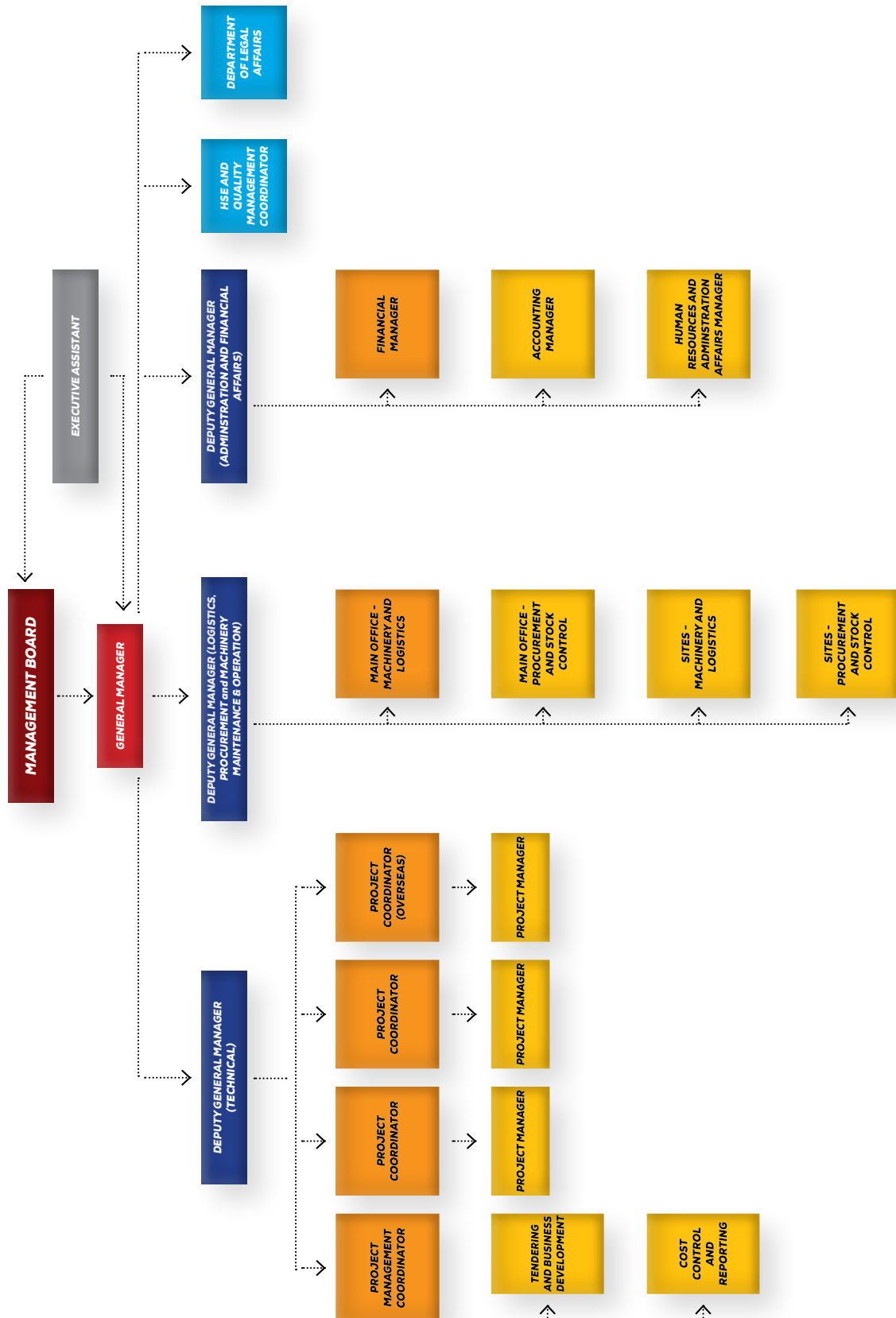
Since its' foundation, İMFALT YOL YAPI SAN. ve TİC. A.Ş. ("Company") entered into and finalized many successful projects both in Turkey and overseas. Our Company has carried out works for the General Directorate of Highways (KGM), General Directorate of State Airports Authority (DHMI), Turkish State Railways (TCDD) and various metropolitan municipalities in Turkey and in overseas has worked with different Turkish and foreign solution partners, which have a leading role in contracting sector.

The specialized areas of our Company are infrastructure, engineering structures, bridges, double highway, runway construction in airports, potable water, rain water and waste water projects and asphalt pavement projects. In addition, our Company, which became a leading company in its sector due to its expert staff and wide plant and equipment park with a total value of €22.500.000 today, still continues to widen its plant and equipment park investment. Our Company's main priority is to implement our projects in compliance with international standards without any default, complete the projects with high quality and in a timely manner and work safety.

Our Company's target is to continue rendering our services both in Turkey and overseas in a way to meet all expectations and needs while taking into account the best quality standard. Along with this target, our Company's mission is to keep up with the latest developments in the sector, sustain our leading role in the sector and to bring our Company to higher levels.



# Organization Chart



**Ministry of Transportation, General Directorate of Highways  
Ankara - Niğde Motorway Construction - Ağaçören Intersection**







## Ongoin Projects



NAME OF EMPLOYER	PROJECT DESCRIPTION
Aydın Metropolitan Municipality Department of Science Affairs	Infrastructure and Superstructure Works for Aydın Province
Arsuz Municipality Presidency	Various Road Construction of Streets
Hatay Metropolitan Municipality	Concrete Asphalt Construction of Districts and Street Roads in 1st Region Antakya, Defne, Samandağ, Altınözü, Yayladağı Districts



\* On-going projects are listed as of the date of February 2022.





# IMFALT

## Completed Projects (1-3)

NAME OF EMPLOYER	PROJECT DESCRIPTION
<b>COMPLETED PROJECTS IN TURKEY</b>	
<b>Private Project</b>	
ERG Construction Trade and Industry Co. Inc. (2020)	Ankara-Niğde Motorway (Km: 106+200 - 161+140)/ (182+500-217+725)/ (256+344-277+048) Earthworks, Structure Works and Drainage Works, Piling Works, Concrete Production, Crushed Stone Production, and Landscaping Works
<b>General Directorate of Highways</b>	
General Directorate of Highways - 2. Division Directorate of Izmir (2016)	Aydın Çine Road (Km: 0 + 000-8 + 700 ) Road Infrastructure Rehabilitation and Repair with Concrete Asphalt Mixtures
General Directorate of Highways - 2. Division Directorate of Izmir (2016)	Denizli-Usak Junction - Cıvırlı-Dinar Road Km: Between 0+000-37+653,74 Soil Leveling, Structures, Bridge, Superstructure and Concrete Asphalt Mixtures and Pavement BST(Bituminous Surface treatment)
General Directorate of Highways - 2. Division Directorate of Izmir (2017)	2. Division Directorate With in Boundaries Rehabilitation of the Existing Pavement and New Pavement of Access Roads
General Directorate of Highways - 2. Division Directorate of Izmir (2017)	Derbent-Salihli-Kemaliye Road Km: 51 + 452-98 + 500 Pavement Rehabilitation of the Existing Works with Concrete Asphalt Mixtures
General Directorate of Highways - 2. Division Directorate of Izmir (2017)	Izmir-Aydın Motorway, Aydın Ring Road, Aydın-Denizli-Muğla Junction Road Construction Work, and Concrete Asphalt Mixtures
General Directorate of Highways - 2. Division Directorate of Izmir (2020)	Marmaris Junction-Köyceğiz-Ortaca Road (Km: 125+000-178+000) Earthworks, Structure and Drainage , Concrete Asphalt Mixtures, and Landscaping Works
<b>Municipality</b>	
Ankara Metropolitan Municipality (2005-2014)	Ankara municipal adjacent areas (boulevards and streets) pavement asphalt with in BST (Bituminous Surface treatment) and engineering structures
IZBETON (Izmir Metropolitan Municipality) (2015)	Concrete Asphalt Mixtures (Binder and Wear Coarse) Material Supply
IZBETON (Izmir Metropolitan Municipality) (2014)	Concrete Asphalt Mixtures Works in Dikili-Odemis Districts
Torbali Municipality (2014)	Supply of Concrete Asphalt Mixtures Works In 6 District
Torbali Municipality (2015)	Supply of Concrete Asphalt Mixtures Works In 5 District
Bornova Municipality- Directorate of Technical Works (2017)	Bornova Municipality year 2017 Concrete Asphalt Works
Aydın Metropolitan Municipality (2015)	Concrete Asphalt Mixtures Works and Maintenance at Miscellaneous Districts in Aydın
Aydın Metropolitan Municipality (2017-2019)	Infrastructure and Superstructure Works for Aydın Province Miscellaneous Districts
Aydın Metropolitan Municipality (2020-2021)	Infrastructure and Superstructure Works for Aydın Province Miscellaneous Districts
Efeler Municipality - Directorate of Technical Works (2021)	Aydın Province Efeler District Pavement Renovation and Concrete Asphalt Mixtures Works
Mugla Metropolitan Municipality (2017)	Marmaris, Datca, Ula, Kavaklıdere, Mentese ve Köyceğiz Districts Hot Bituminous Mixture pavement, chip seal, Parquet Border Construction works
Mugla Metropolitan Municipality (2017)	Bodrum, Milas ve Yatagan District Hot Bituminous Mixture pavement, chip seal, Parquet Border Construction works

\* Completed projects are listed as of the date of February 2022.

## Completed Projects (2-3)



NAME OF EMPLOYER	PROJECT DESCRIPTION
Muğla Büyükşehir Belediyesi (2018)	Mugla Province Mentese Ataturk Boulevards between 0+000 / 1+290 km BSK, PMT, engineering structures, Landscaping ,Parquet Border Construction works
Muğla Büyükşehir Belediyesi (2019)	Mugla Province Bodrum, Milas, Yatağan , Mentese Miscellaneous Districts Plentmiks, Hot Bituminous Mixture pavement, Parquet Border and Structure Works
Muğla Büyükşehir Belediyesi (2019)	Mugla Province Mentese District Ugur Mumcu boulevard , Cumhuriyet street , Recai Güreli street, Abdi Ipekci street, road, street, Boulevards, Rehabilitation and Repair work.
Hatay Metropolitan Municipality (2016)	Samandag-Defne districts Asphalt Works at Various Streets
Hatay Metropolitan Municipality (2016)	Hatay Municipality Various Road Pavement
Hatay Metropolitan Municipality (2016)	Erzin District Concrete Asphalt Mixtures
Hatay Metropolitan Municipality (2016)	Dortyol District HMA Works
Hatay Metropolitan Municipality (2016)	Antakya-Samandag-Defne-Yayladag-Altinozu-Kumlu-Reyhanli-Kirikhan-Hassa Districts HMA Works
Hatay Metropolitan Municipality (2016)	Arsuz-Belen Districts HMA Works
Hatay Metropolitan Municipality (2016)	Iskenderun-Belen-Arsuz-Dortyol-Payas-Erzin Districts Asphalt Patch Works
Hatay Metropolitan Municipality (2017)	Arsuz district of Hatay Metropolitan Municipality Asphalt Pavement Works
Hatay Metropolitan Municipality (2018)	Iskenderun 1st Region Concrete Asphalt Construction Work
Hatay Metropolitan Municipality (2018)	Yayladag Province Concrete Asphalt Construction Work
Hatay Metropolitan Municipality (2019)	Payas-Dortyol-Erzin Province Asphalt Patch Work to Use Road Repairs
Hatay Metropolitan Municipality (2019)	Yayladag Province Concrete Asphalt Construction Work
Hatay Metropolitan Municipality (2021)	Defne District Concrete Asphalt Construction Work
Hatay Metropolitan Municipality Support Services Department (2015)	Arsuz District Concrete Asphalt Works
Hatay Metropolitan Municipality Support Services Department (2017)	Defne District Concrete Asphalt Works
Hatay Metropolitan Municipality Support Services Department (2017)	Payas District Concrete Asphalt Works
Hatay Metropolitan Municipality Support Services Department (2017)	Samandag District Concrete Asphalt Works
Hatay Metropolitan Municipality Support Services Department (2018)	Antakya Organized Industrial Zone Concrete Asphalt Works
Hatay Metropolitan Municipality Support Services Department (2018)	2.region (Samandağ, Defne, Arsuz, Payas) Concrete Asphalt Works
Hatay Metropolitan Municipality Support Services Department (2019)	Samandag Province Concrete Asphalt Works
Hatay Metropolitan Municipality Support Services Department (2019)	Defne Province Concrete Asphalt Works
Hatay Metropolitan Municipality Support Services Department (2019)	Arsuz Province Concrete Asphalt Works
Hatay Metropolitan Municipality Support Services Department (2019)	Arsuz Province, Street and Avenue Concrete Asphalt Works

\* Completed projects are listed as of the date of February 2022.

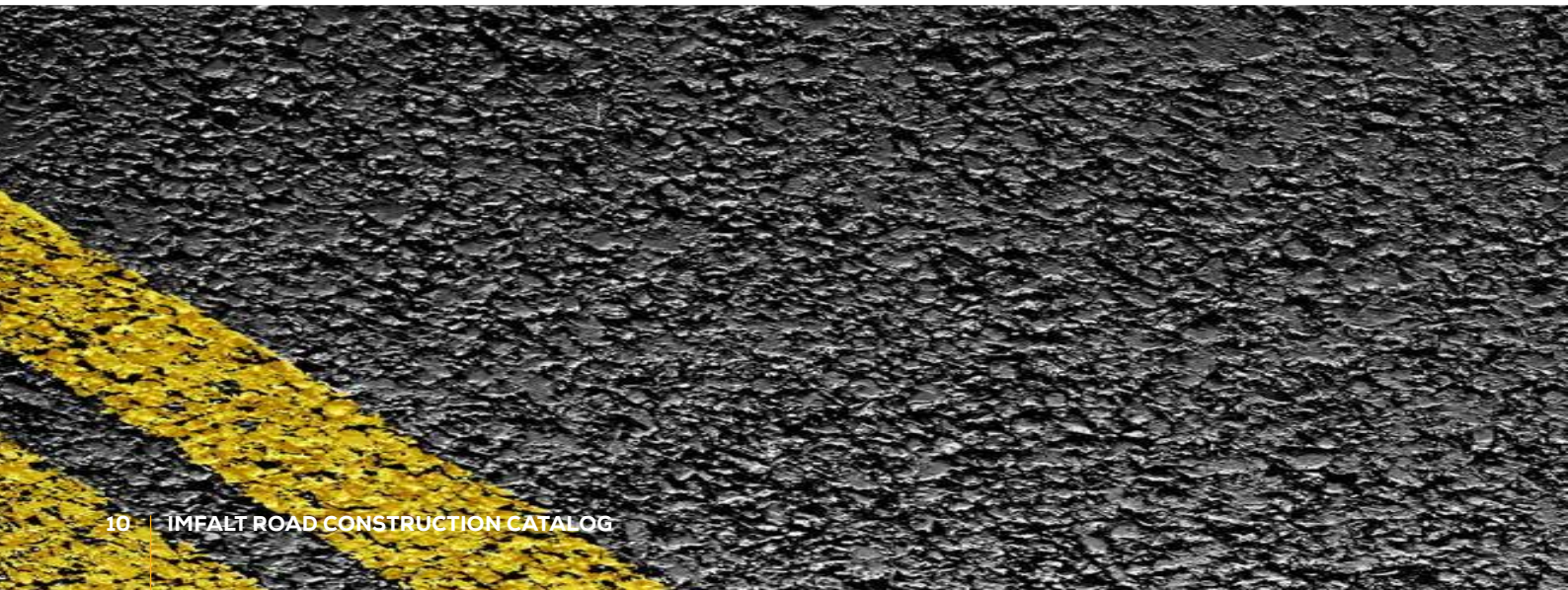


## Completed Projects (3-3)

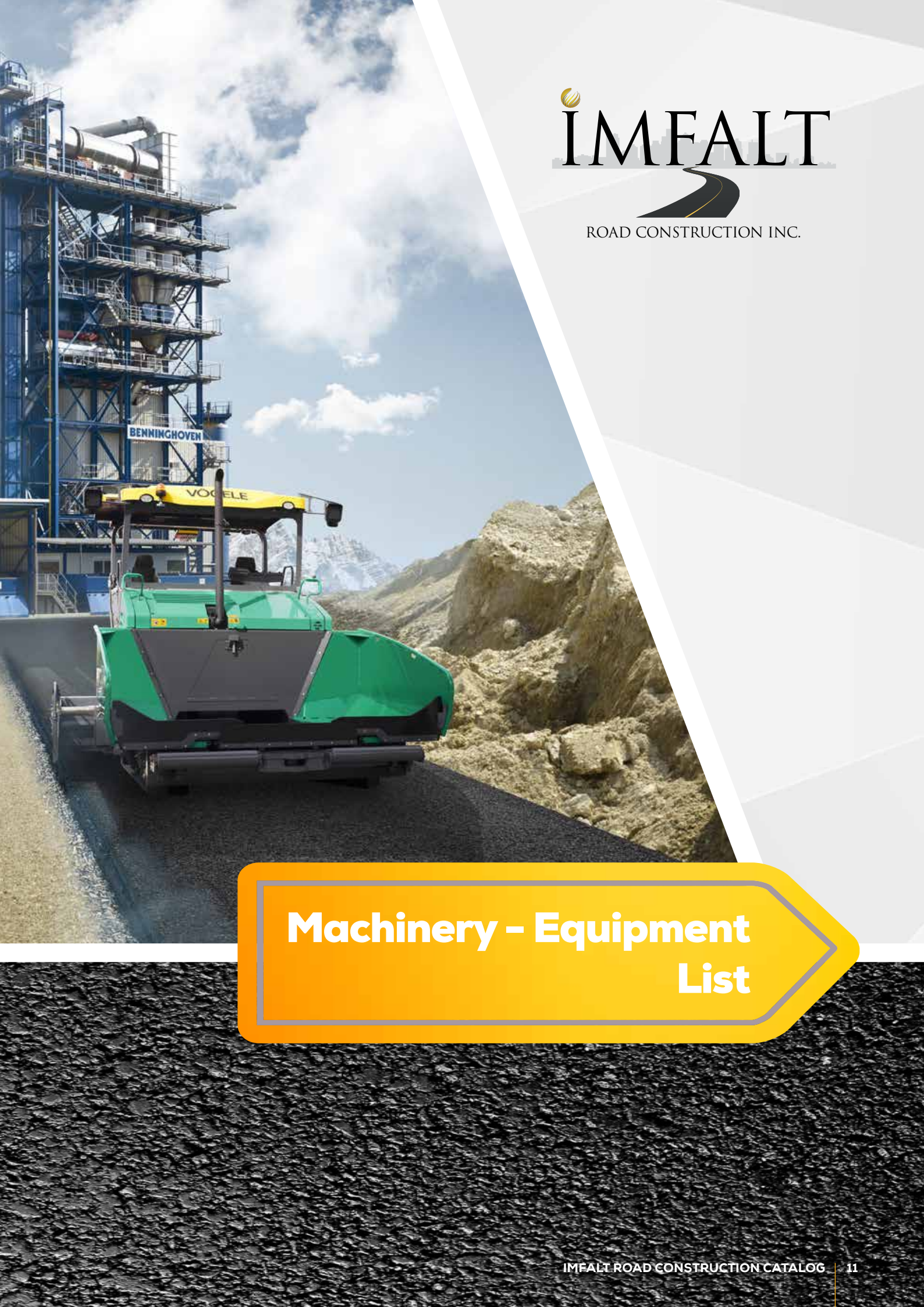
NAME OF EMPLOYER	PROJECT DESCRIPTION
Hatay Metropolitan Municipality Support Services Department (2019)	Defne Province, 1st Region, Street and Avenue Concrete Asphalt Works
Hatay Metropolitan Municipality Support Services Department (2019)	Defne Province, 2nd Region, Street and Avenue Concrete Asphalt Works
Hatay Metropolitan Municipality Support Services Department (2019)	Various Road Concrete Asphalt, Patch and CRS Chip Seal Construction Works
Arsuz Municipality (2016)	Asphalt Works within the Municipality Boundaries
Arsuz Municipality (2018)	Arsuz Municipality Road Construction Work
Arsuz Municipality (2018)	Arsuz Municipality Construction Works of Road and Sidewalk
Iskenderun Municipality (2017)	Concrete Asphalt Mixtures within the Municipality Boundaries
Iskenderun Municipality (2018)	Various Street and Avenue Sidewalk Tiles Construction Work
Iskenderun Municipality (2021)	Various Street and Avenue road Asphalt work
<b>Others</b>	
DHMI (2009)	Malatya Province Airport Apron and Runway Construction Work
General Directorate of Turkish State Railways Enterprises (TCDD) Directorate for Izmir Port Operations (2014)	Izmir Port Roads Rehabilitation Works
Torbali Governorship (2014)	Concrete Asphalt Mixtures between Izmir- Karakuyu-Orman koy-Torbali-Dagtekin Village Road
Foca District (2014)	Foca Naval Base Road 4 Km. Concrete Asphalt Mixtures
National Defense Department (2014)	Emergency Runway and Taxiway Concrete Asphalt Mixtures
Enam Construction and Food Industry (2016)	Iskenderun Multi-storey Underpass Construction
Kirikkale Central Village Service Unions Presidency (2017)	Concrete Asphalt Mixtures of Existing Roads of Kirikkale
Hatay Governor Investment Monitoring and Coordination Directorate (2017)	Concrete Asphalt Mixtures at Altinozu district
Hatay Governor Investment Monitoring and Coordination Directorate (2017)	Concrete Asphalt Mixtures in Yayladagi-Reyhanli-Altinozu-Samandag Districts
<b>COMPLETED PROJECTS ABROAD</b>	
Tiflis Municipality (2007)	Tbilisi Georgia Asphalt Construction and Infrastructure Works in Various Street
Yeni gün-Maktaş-Ay deniz Ortaklığı (2008)	Kabul Afghanistan International Airport Runway Rehabilitation Project
Ahmet Ay Deniz Construction (Nato Namsa) (2008)	Kabul Afghanistan International Airport Taxiway-Apron-Helipad Construction
Yenigun Construction (2008)	Kandahar Airbase Runway Construction
Metis Construction (2011)	Libya Waddan- Sebha- Soukna - State Highway Construction
Tav - Yenigün JV (2013)	Concrete Asphalt Mixtures at Prince Mohammed bin Abdulaziz International Airport in Madinah Al-Munawarah, Saudi Arabia
Tav - Yeni gün JV (2016)	Jeddah Airport Hangar Construction

\* Completed projects are listed as of the date of February 2022.









## Machinery – Equipment List

## Machinery – Equipment List (1-2)



GROUP	MACHINERY-EQUIPMENT	BRAND	MODEL	TYPE	PIECE
EXCAVATORS	CRAWLER EXCAVATORS	HITACHI	2018	ZAXIS 490	5
EXCAVATORS	CRAWLER EXCAVATORS	HITACHI	2018	ZAXIS 350	2
EXCAVATORS	WHEEL EXCAVATORS	HITACHI	2017	170 W	1
EXCAVATORS	WHEEL EXCAVATORS	HITACHI	2006	ZX130W	1
GRADER	GRADER	CATERPILLAR	2017	140M	5
GRADER	GRADER	mitsubishi	2008	MG730	1
GRADER	GRADER	CATERPILLAR	1998	140G	1
GRADER	GRADER	CATERPILLAR	1996	120G	1
LOADER	WHEEL LOADERS	KAWASAKI	2018	80Z6	3
LOADER	WHEEL LOADERS	KAWASAKI	2018	90Z6	2
LOADER	WHEEL LOADERS	KOMATSU	2016	WA470-6	2
LOADER	WHEEL LOADERS	KOMATSU	2007	WA380-6	2
LOADER	WHEEL LOADERS	KAWASAKI	1998	85ZIV	1
LOADER	WHEEL LOADERS	KOMATSU	1997	WA420-3	3
LOADER	TRACK LOADERS	CATERPILLAR	1993	963	1
BACKHOE LOADER	BACKHOE LOADER	HİDROMEK	2016	102S	2
BACKHOE LOADER	BACKHOE LOADER	HİDROMEK	2012	102B	3
BACKHOE LOADER	BACKHOE LOADER	CATERPILLAR	2002	438D	1
MINI LOADER	MINI LOADER	GEHL	2017	V270	1
MINI LOADER	MINI LOADER	BOBCAT	2016	S530	2
MINI LOADER	MINI LOADER	BOBCAT	2008	S175	1
FORKLIFT	FORKLIFT	ÇUKUROVA	2016	XF250	1
DOZER	DOZER	KOMATSU	2017	D85EX-15	2
DOZER	DOZER	KOMATSU	2015	D85ESS-2	1
ASPHALT PAVER	ASPHALT PAVER	BOMAG	2018	BF800C	2
ASPHALT PAVER	ASPHALT PAVER	VÖGELE	2017	S1900-3	4
ASPHALT PAVER	ASPHALT PAVER	VÖGELE	2015	S1900-3	2
ASPHALT PAVER	ASPHALT PAVER	BOMAG	2014	BF800C	3
ASPHALT PAVER	ASPHALT PAVER	VÖGELE	2013	S1900-3	2
ASPHALT PAVER	ASPHALT PAVER	BOMAG	2013	BF800C	4
ASPHALT PAVER	ASPHALT PAVER	BOMAG	2012	BF800C	1
ASPHALT PAVER	ASPHALT PAVER	VÖGELE	2012	S2100-2	2
ASPHALT PAVER	ASPHALT PAVER	VÖGELE	2011	S1900-2	8
GRİTTER	GRİTTER	PHOENIX	1997	10CP53	1
COLD MILLING MACHINE	COLD MILLING MACHINE	WIRTGEN	2022	W200F	1



## Machinery – Equipment List (2-2)

GROUP	MACHINERY-EQUIPMENT	BRAND	MODEL	TYPE	PIECE
COLD MILLING MACHINE	COLD MILLING MACHINE	WIRTGEN	2016	W200	2
COLD MILLING MACHINE	COLD MILLING MACHINE	WIRTGEN	2000	W1000F	1
ROLLER	PNEUMATIC TIRED ROLLER	BOMAG	2016	BW24RH	8
ROLLER	PNEUMATIC TIRED ROLLER	HAMM	2012	GRW280-10	6
ROLLER	PNEUMATIC TIRED ROLLER	AMMANN	2008	AP240	1
ROLLER	PNEUMATIC TIRED ROLLER	YTO	2008	LTP1016H	3
ROLLER	PNEUMATIC TIRED ROLLER	YTO	2007	YL16G	2
ROLLER	PNEUMATIC TIRED ROLLER	HITACHI	1999	RT205	1
ROLLER	PNEUMATIC TIRED ROLLER	HAMM	1998	GRW10	1
ROLLER	TANDEM ROLLER	BOMAG	2016	BW161AD-5	10
ROLLER	TANDEM ROLLER	BOMAG	2014	BW161AD-4	2
ROLLER	TANDEM ROLLER	HAMM	2013	HD140	4
ROLLER	TANDEM ROLLER	BOMAG	2012	BW202AD-4	8
ROLLER	TANDEM ROLLER	HAMM	2011	HD110	3
ROLLER	TANDEM ROLLER	BOMAG	2010	BW161AD-4	13
ROLLER	TANDEM ROLLER	BOMAG	2009	BW161AD-4	6
ROLLER	TANDEM ROLLER	BOMAG	2008	BW161AD-4	1
ROLLER	TANDEM ROLLER	BOMAG	2007	BW151AD-4	1
ROLLER	COMBINE ASPHALT	ABG	1982	-	1
ROLLER	COMPACTOR with VIBRATORY DRUM	BOMAG	2017	BW216 D-5	6
ROLLER	COMPACTOR with VIBRATORY DRUM	HAMM	2016	3412	5
ROLLER	COMPACTOR with VIBRATORY DRUM	BOMAG	2016	BW213D-4	4
ROLLER	COMPACTOR with VIBRATORY DRUM	BOMAG	2016	BW213D-4	1
ROLLER	COMPACTOR with VIBRATORY DRUM	HAMM	2015	3412	4
ROLLER	COMPACTOR with VIBRATORY DRUM	AMMANN	2007	ASC110	1
ROLLER	COMPACTOR with VIBRATORY DRUM	VIBROMAX	2005	VM106D	1
ROLLER	COMPACTOR with VIBRATORY DRUM	HAMM	1999	2420	1
ROLLER	COMPACTOR with VIBRATORY DRUM	BOMAG	1997	BW217PD	1
ROLLER	COMPACTOR with VIBRATORY DRUM	CASE VIBROMAX	-	VV1102D	1
ROLLER	ASPHALT PATCHING ROLLER	BOMAG	2016	BW120AD-5	6
ROLLER	ASPHALT PATCHING ROLLER	VOLVO	2008	DD31HF	1
ROLLER	ASPHALT PATCHING ROLLER	BOMAG	2007	BW120AD-4	14
ROLLER	ASPHALT PATCHING ROLLER	CATERPILLAR	2006	CB214E	1
ROLLER	ASPHALT PATCHING ROLLER	BOMAG	1999	BW120AD-3	2



## Vehicle Park (1-2)

BRAND	MODEL	GROUP	PIECE
BMC ASPHALT PATCH VEHICLE	1994	ASPHALT PATCH VEHICLE	1
FORD CARGO 2114	2001	REPAIR, MAINTENANCE AND OILING MACHINE	2
BMC FATİH MAINTENANCE VEHICLE	1992	REPAIR, MAINTENANCE AND OILING MACHINE	1
SEMI TRAILER TE-200 BIOLOGICAL TANK	1982	FUEL TANKER BIOLOGICAL	1
VOLVO VTA 3T TOW TRUCK	2017	TOW TRUCK	1
FORD CARGO 1842	2016	TOW TRUCK	1
FORD CARGO 3233	2016	TOW TRUCK	7
IVECO 440 S	2015	TOW TRUCK	23
MERCEDES BENZ 375.40 1840 LS	2015	TOW TRUCK	10
FORD CARGO 1846	2015	TOW TRUCK	5
MERCEDES BENZ TOW TRUCK	2014	TOW TRUCK	5
FORD CARGO 1846	2013	TOW TRUCK	3
MERCEDES 940.36	2013	TOW TRUCK	2
FORD CARGO 2532	2013	TOW TRUCK	1
MERCEDES BENZ 375.37	2010	TOW TRUCK	3
MERCEDES BENZ AXOR 3029 K	2010	TOW TRUCK	3
FORD CARGO 2524	2006	TOW TRUCK	1
MERCEDES BENZ 3031 B	2005	TOW TRUCK	2
BMC FATİH 280.26	2007	DISTRIBUTOR	2
BMC FATİH DISTRIBUTOR	1997	DISTRIBUTOR	1
SEMI TRAILER KOLUMAN	2018	TRUCK BED	21
SEMI TRAILER ALAMEN	2016	TRUCK BED	15
SEMI TRAILER ÖZDEMİR SAN	2016	TRUCK BED	8
SEMI TRAILER ÖZMAKSAN	2016	TRUCK BED	1
SEMI TRAILER TIR SAN	2015	TRUCK BED	4
SEMI TRAILER ÖZSAN	2015	TRUCK BED	1
EŞMELİLER TRUCK BED	2014	TRUCK BED	2
ALTINEL TRUCK BED	2013	TRUCK BED	2
SEMI TRAILER MEILLER	2012	TRUCK BED	9
FORD CARGO	2015	DUMP TRUCK	3
FORD CARGO CKL-1	2013	DUMP TRUCK	1
BMC FATİH	2006	DUMP TRUCK	2
BMC 280.26	2005	DUMP TRUCK	3

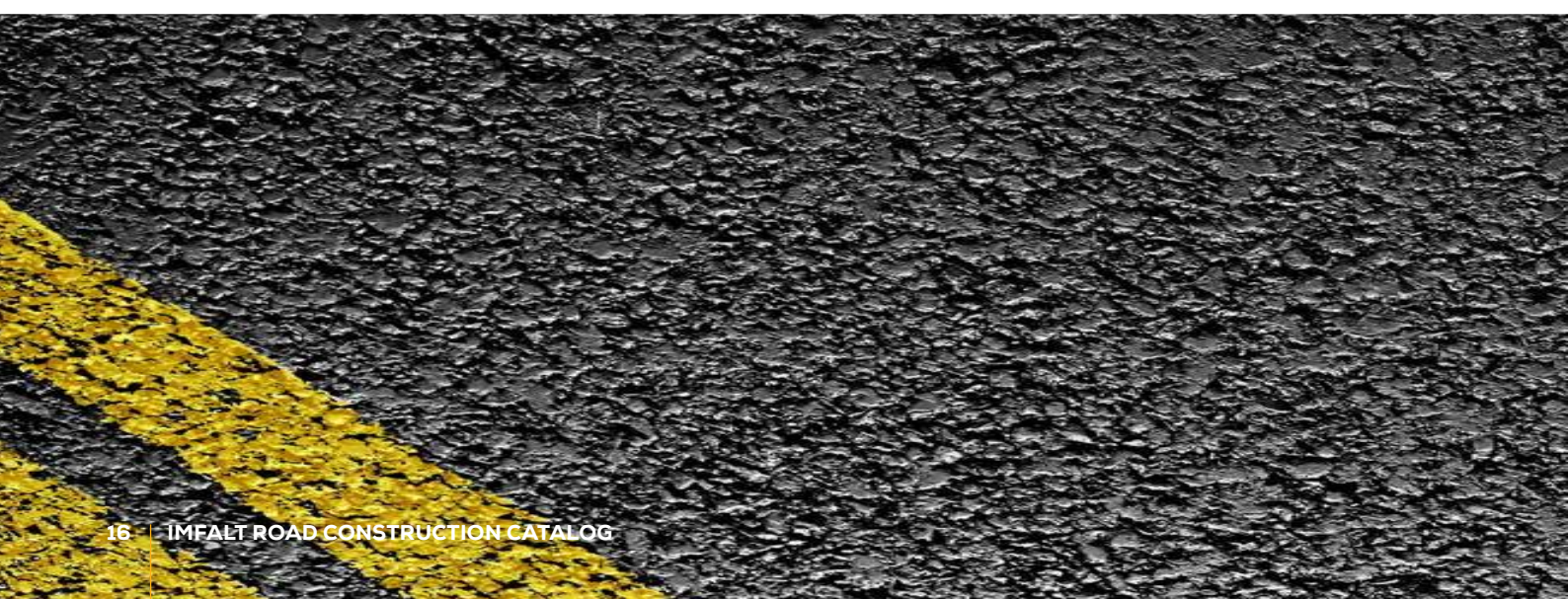




## Vehicle Park (2-2)

BRAND	MODEL	GROUP	PIECE
FORD CARGO	2004	DUMP TRUCK	1
DODGE AS 950	2001	DUMP TRUCK	3
FORD TRANSIT	2017	PICK-UP	2
FORD TRANSIT	2016	PICK-UP	2
FORD TRANSIT	2015	PICK-UP	4
IVECO 35.15 PICK-UP	2014	PICK-UP	2
FORD TRANSIT	2013	PICK-UP	2
FORD TRANSIT	2004	PICK-UP	3
DODGE AS 250 PICK-UP	2004	PICK-UP	2
DODGE 26.235	2001	PICK-UP	1
SCANIA G 450	2018	TOW TRUCK	20
SCANIA G400	2013	TOW TRUCK	2
SCANIA G 440	2013	TOW TRUCK	2
SEMI TRAILER ALAMEN BITUMEN TANKER	2016	BITUMEN TANKER	1
ALAMEN TRAILER FUEL TANKER	2015	FUEL TANKER	2
ALAMEN TRAILOR TANKER	2014	WATER TANKER	2
FORD CARGO FUEL TANKER	2010	FUEL TANKER	1
FORD CARGO	2010	WATER TANKER	1
BMC PROFESYONEL FUEL TANKER	2009	FUEL TANKER	2
IVECO 250.24 WATER TANKER	2007	WATER TANKER	3
FORD CARGO 2524 WATER TANKER	2006	WATER TANKER	1
MITSUBISHI CANTER 659 WATER TANKER	2005	WATER TANKER	1
IVECO 8012FUEL TANKER	2002	FUEL TANKER	1
ISUZU TANKER	2001	WATER TANKER	1
FORD CARGO 2520 FUEL TANKER	2001	FUEL TANKER	1
FORD CARGO 2520 WATER TANKER	1999	WATER TANKER	1
BMC FATIH WATER TANKER	1995	WATER TANKER	2
IVECO 65.9 AKARYAKIT TANKERİ	1992	FUEL TANKER	1
FORD WATER TANKER	1990	WATER TANKER	1
FORD CARGO	2012	STREET SWEEPING MACHINE (VACUUMED)	2
MITSUBISHI CANTER SWEEPING MACHINE	2012	STREET SWEEPING MACHINE (VACUUMED)	1
FORD CARGO SWEEPING MACHINE	2010	STREET SWEEPING MACHINE (VACUUMED)	2
MERCEDES 2521 CRANE	2000	CRANE	1









## Production Facilities



## Production Facilities



GROUP	BRAND	YEAR OF MANUFACTURE	CAPACITY & MODEL	PIECE
ASPHALT PLANT	MARINI	2016	320T/H	1
ASPHALT PLANT	MARINI	2016	240T/H	1
ASPHALT PLANT	AMMANN	2017	340T/H	1
ASPHALT PLANT	AMMANN	1999	200T/H	1
ASPHALT PLANT	BENNINGHOVEN	2008	160 T/H	1
ASPHALT PLANT	WIBAU	1985	160 T/H	1
POLYMER MODIFIED BITUMEN PLANT	OKUR	2008	MISCELLANEOUS	1
EMULSION PLANT	OKUR	2015	EP8	2
BITUMEN PACKING AND MELTING SYSTEM	OKUR	MISCELLANEOUS	MISCELLANEOUS	1
AGREGATE BASE COURSE MIXING PLANT	MISCELLANEOUS	MISCELLANEOUS	600T/H	4
MOBILE CONCRETE PLANT	MESAMAK	2012	70m <sup>3</sup>	3
CRUSHING-SCREENING PLANT	KÖKSALLAR		110	1
CRUSHING-SCREENING PLANT	KÖKSALLAR		130	1
CRUSHING-SCREENING PLANT	AYMAK		140	1
CRUSHING-SCREENING PLANT	AYMAK		160	1
WASHING AND SCREENING PLANT	MISCELLANEOUS	MISCELLANEOUS	MISCELLANEOUS	1



**Aydın - Kuşadası - Asphalt Plant (Parker 160 t/h)**





**Hatay - Asphalt Plant (Marini 240 t/h)**











**Kırşehir - Yeşilli - Crushing & Screening Plant**



## Aydın - Köşk - Crushing & Screening Plant









**Aksaray - Sarıyahşi - Asphalt Plant (Marini 320 t/h)**







**Muğla - Asphalt Plant (Marini 240 t/h)**









**Aydın - Astim - Asphalt Plant (Benninghoven 160 t/h)**







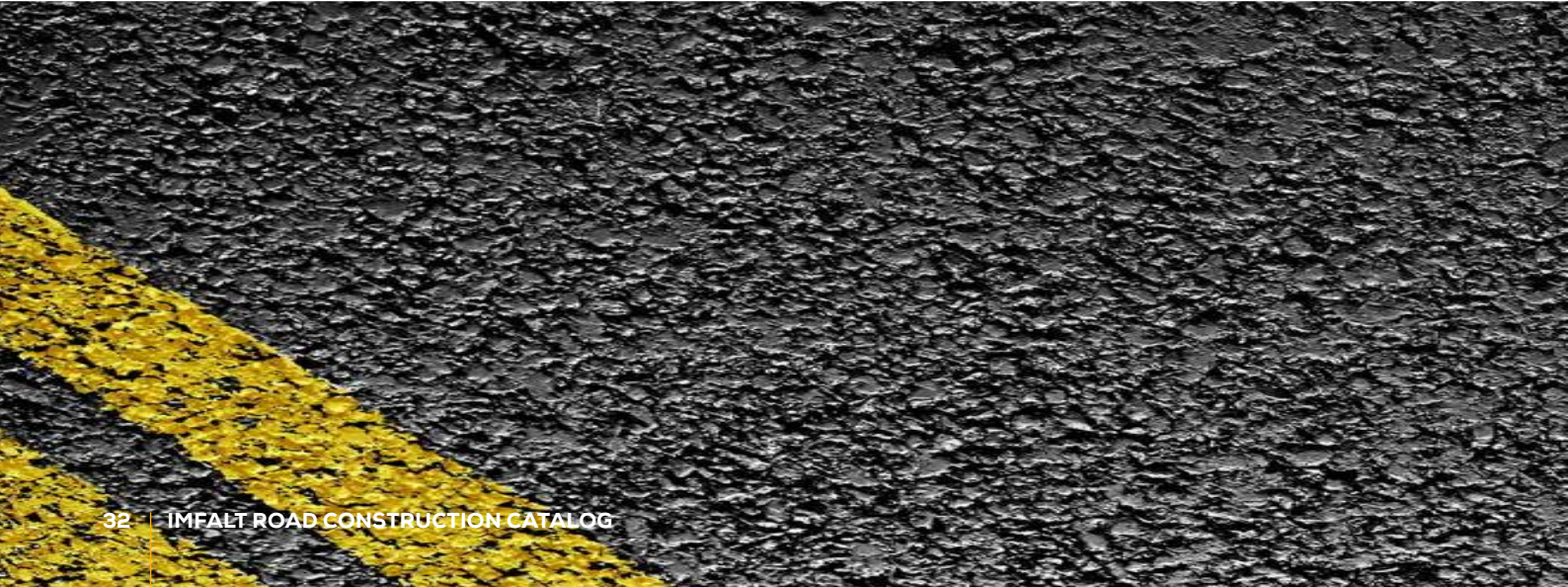


**Saudi Arabia - Asphalt Plant (Amman 340 t/h)**













ROAD CONSTRUCTION INC.



## Ongoing Projects





**Aydın Province,  
Infrastructure and  
Superstructure Works in  
Various District Streets and  
Roads**

.....

Project Location:	: Aydın, TURKEY
Contract Date	: April 20, 2021
Employer	: Aydın Metropolitan Municipality
Contractor	: Imfalt Road Construction Inc.
Scope of Contract	: Hot Bituminous Mixture, Underground and Surface Storm Drainage Lines, Concrete paving blocks, gutter and curbs









## **Aydın Metropolitan Municipality - Hot Bituminous Mixture**





IMFALT





**Aydın Metropolitan Municipality - Storm Drainage Works**









## Arsuz Municipality, Road Maintenance and Repair Works

.....

Project Location:	: Arsuz, Hatay, TURKEY
Contract Date	: January 13, 2021
Employer	: Arsuz Municipality
Contractor	: Imay Construction
Scope of Contract	: Concrete Asphalt, Chip Seal Works

---









**Arsuz, Hatay - Concrete Asphalt Works**









**Concrete Asphalt  
Construction of Districts  
and Street Roads in 1st  
Region Antakya, Defne,  
Samandağ, Altınözü,  
Yayladağı Districts**

.....

Project Location: : Hatay, TURKEY  
Contract Date : February 7, 2022  
Employer : Hatay Metropolitan Municipality  
Contractor : İmfalt Yol Yapı San. Tic. A.Ş.  
Scope of Contract : Concrete Asphalt

---







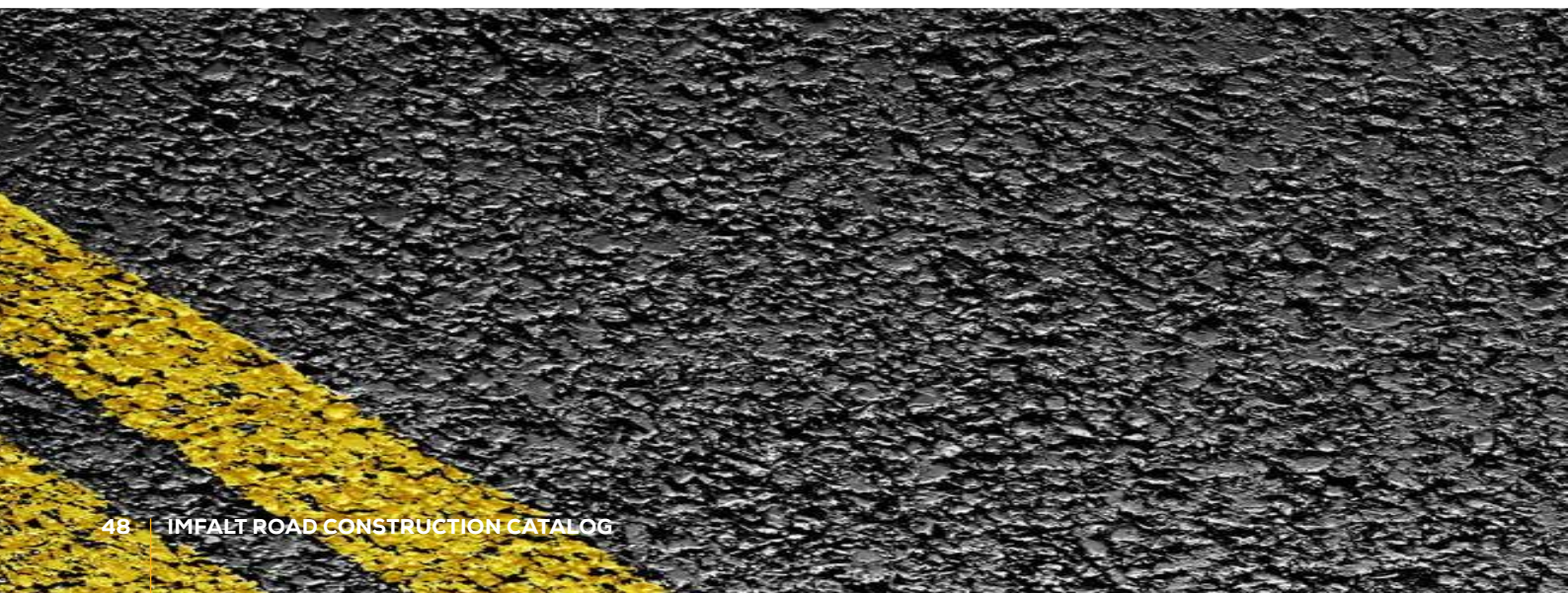


## Hatay 1st Region Concrete Asphalt Works











## Completed Works





**Ankara - Niğde Motorway**  
**Project Km between**  
**(106+200 – 161+140),**  
**(193+000 – 217+725) and**  
**(256+344 – 277+048)**  
**Construction Works**

**Project Location:** : Ankara, Aksaray, Niğde, TURKEY  
**Contract Date** : February 9, 2018  
**Employer** : ERG İnşaat Tic. ve San. A.Ş.  
**Contractor** : İmfalt Yol Yapı A.Ş.  
**Scope of Contract** :

- › Earth Works (31,5 Million m3)
- › Engineering Structures (120 pcs Culvert, 9 pcs Underpass, 56 pcs. Displacement and Pass)
- › Birdges and Overpasses (6 pcs Bridge and 21 pcs Overpass, 1.116m Bored Pile)
- › Drainage Works(97 km Underground Drainage, 98,8 km Ditches)
- › Pavement Works (100 km Main Road, 30,8 Km Intersection and Side Roads)
- › 1.475.087 t Plant Mix Base and Subbase
- › 603.315 t Bituminous Treated Base and Binder Course
- › 150.000 t SMA (Stone Mastic Asphalt)
- › 5.000.000 t Crushed Stone Produced (Aggregate)
- › 105.600 m3 Concrete Produced and Poured







**Ministry of Transportation, General Directorate of Highways**  
**Ankara - Niğde Motorway Earth Works**  
**20.4 Million m<sup>3</sup> Excavation**  
**12.1 Million m<sup>3</sup> Filling**







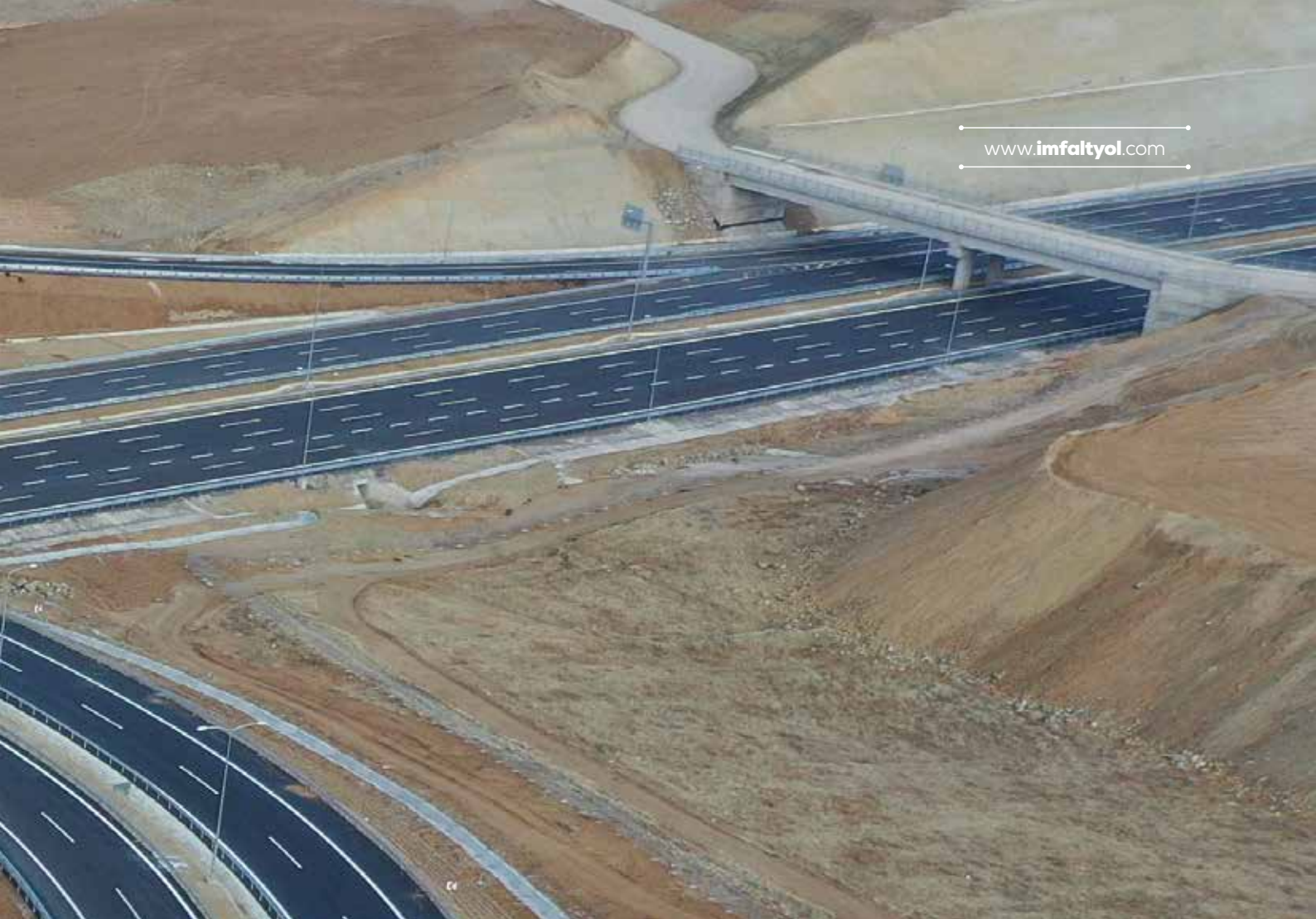


**Ministry of Transportation, General Directorate of Highways**  
**Ankara - Niğde Motorway Bridges**  
**6 pcs Bridges (Between 88-55 m length)**  
**1.116 m Bored Piles**



**Ministry of Transportation, General Directorate of Highways**  
**Ankara - Niğde Motorway Engineering Structures**  
**120 pcs Culvert**  
**9 pcs Underpass**







**Ministry of Transportation, General Directorate of Highways**  
**Ankara - Niğde Motorway Drainage Works**  
**97 km Underground Drainage**  
**98,8 km Ditches**





**Ministry of Transportation, General Directorate of Highways**  
**Ankara - Niğde Motorway Displacement of Existing Lines**  
**56 pcs. Water, Power, Gas Lines Displacement**





**Ministry of Transportation, General Directorate of Highways**  
**Ankara - Niğde Motorway Pavement Works**  
**100 km Main Road, 30,8 Km Intersection and Side Roads,**  
**2 pcs Motorway Service Areas**  
**1.475.087 t Plant Mix Base and Subbase**  
**603.315 t Bituminous Treated Base and Binder Course**  
**150.000 t SMA (Stone Mastic Asphalt)**



IMFALT

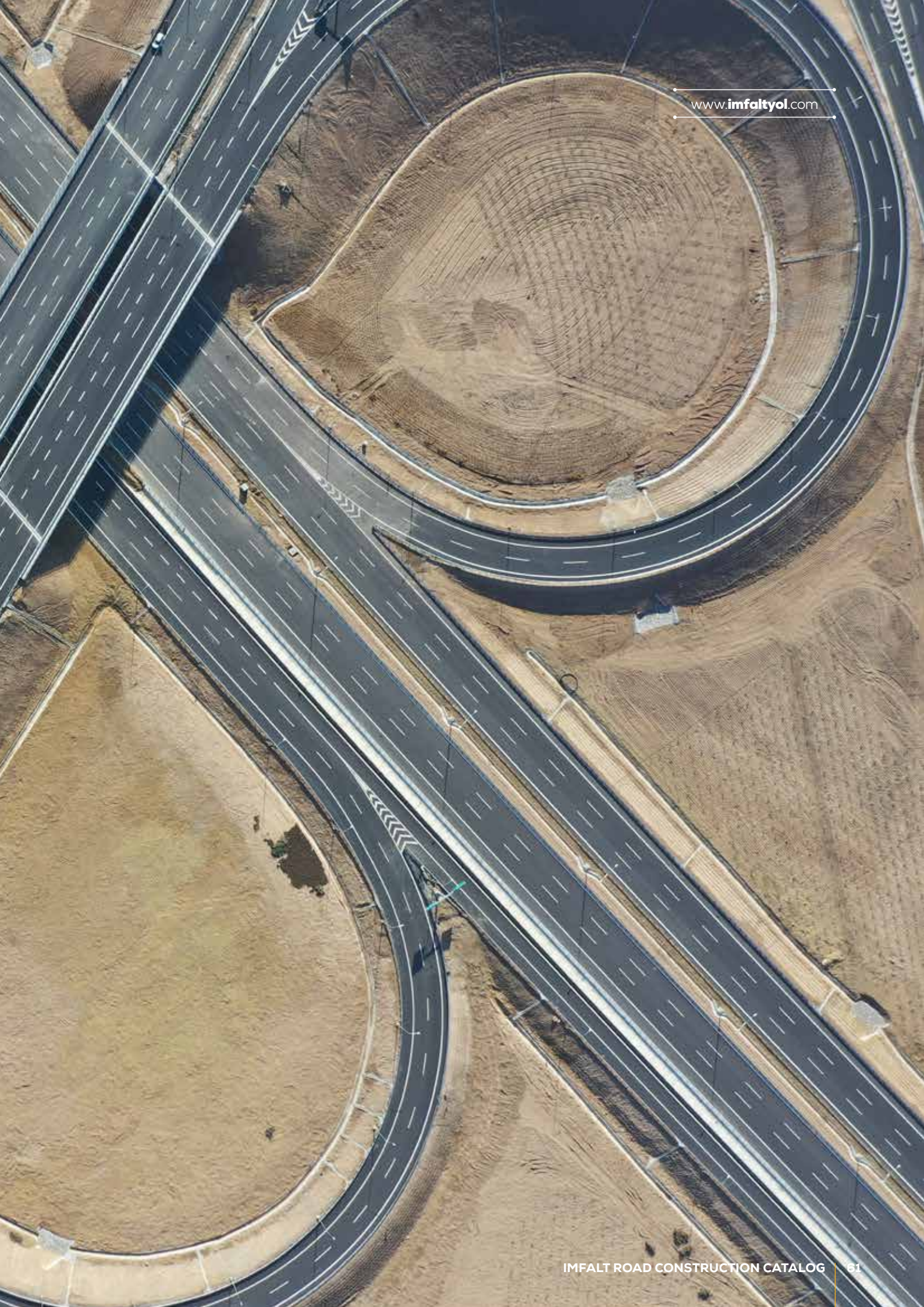






**Ministry of Transportation / General Directorate of Highways  
Ankara - Niğde Motorway**









**İskenderun District,  
Concrete Asphalt Pavement  
Works in Various Streets  
and Roads**

Project Location:	: Iskenderun, Hatay, TURKEY
Contract Date	: May 21, 2021
Employer	: Iskenderun Municipality
Contractor	: İmay Construction
Scope of Contract	: Concrete Asphalt Pavement, Concrete paving blocks, gutter and curbs





**Hatay Province Defne District,  
Concrete Asphalt Pavement  
Works in Various Streets and  
Roads**

.....

Project Location: : Defne, Hatay, TURKEY  
Employer : Defne Municipality  
Contractor : Imfalt Road Construction Inc.  
Scope of Contract : Concrete Asphalt Pavement

---





**Efeler District, Hot  
Bituminous Mixture Asphalt  
and Rehabilitation of  
Sidewalks Works**

.....

Project Location:	: Efeler, Aydin, TURKEY
Contract Date	: June 2, 2021
Employer	: Efeler Municipality
Contractor	: Imfalt Road Construction Inc.
Scope of Contract	: Hot Bituminous Mixture Asphalt and Rehabilitation of Sidewalks

---





## Infrastructure and Superstructure Works for Aydın Province

.....

Project Location: : Aydın, TURKEY  
Contract Date : September 15, 2017  
Employer : Aydın Metropolitan Municipality  
Contractor : Imfalt Road Construction Inc.  
Scope of Contract : Infrastructure Works  
Superstructure Works

—————





**Concrete Asphalt Pavement  
Works for Hatay Province  
Yayladağı-Reyhanlı-Altınözü-  
Samandağ Districts / Concrete  
Asphalt Pavement Works for  
Hatay Province Section 3  
(Altınözü-Samandağ  
Districts)**

.....

Project Location:	: Hatay, TURKEY
Contract Date	: March 14, 2018
Employer	: Hatay Governorship Investment Monitoring and Coordination Directorate
Contractor	: Imfalt Road Construction Inc.
Scope of Contract	: Concrete Asphalt Pavement Works





**Concrete Asphalt Pavement  
Works for Hatay Province  
2. Regional (Samandağ,  
Defne, Arsuz, Payas)**

.....

Project Location:	: Hatay , TURKEY
Contract Date	: February 28, 2018
Employer	: Hatay Metropolitan Municipality
Contractor	: Imfalt Road Construction Inc.
Scope of Contract	: Concrete Asphalt Pavement Works

---

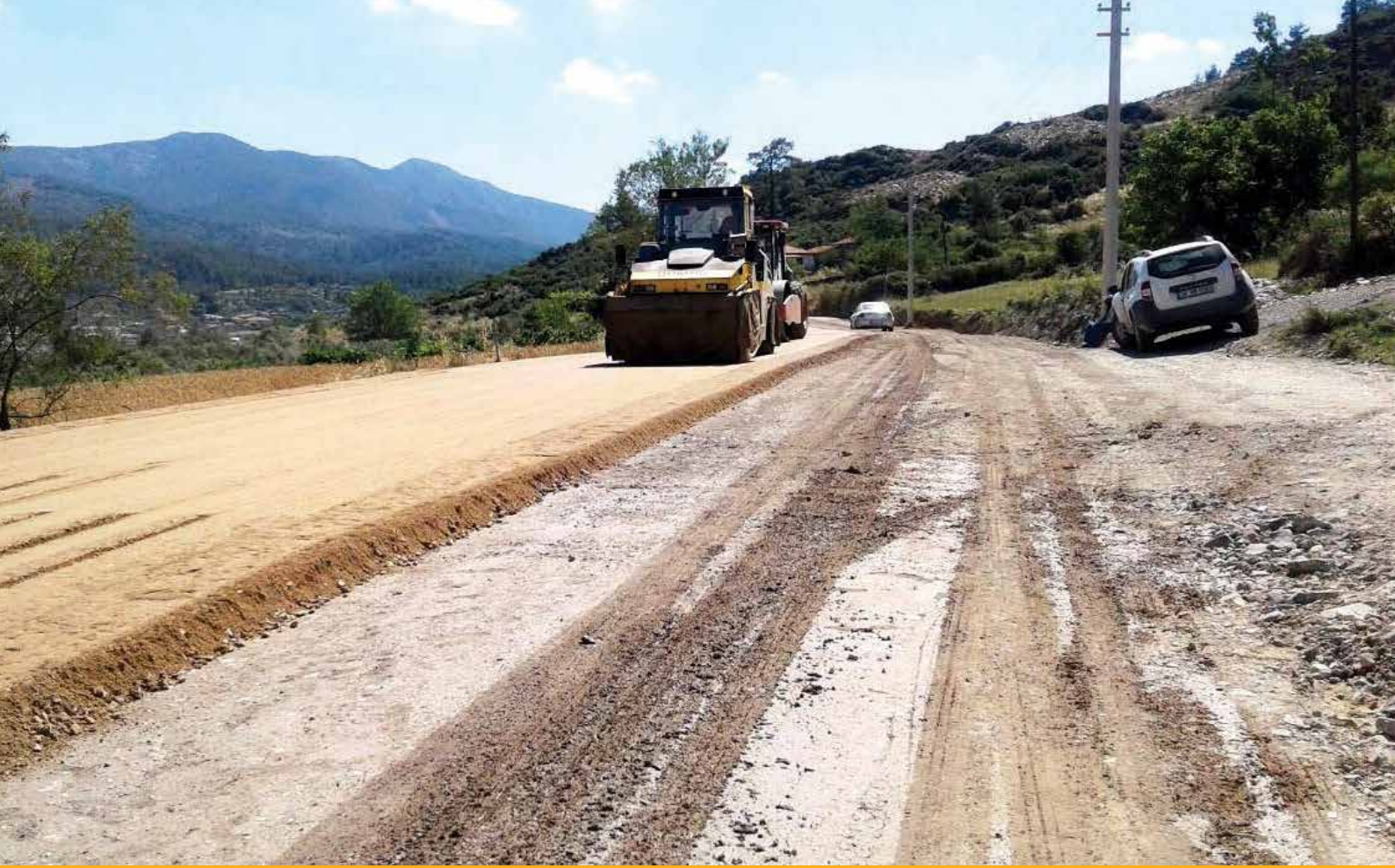




**Restoration and Organizing  
Works for Muğla Province  
Menteşe district ( Uğur  
Mumcu boulevard,  
Cumhuriyet street and  
square, Recai Güreli street,  
Abdi İpekçi street )**

Project Location: : Muğla, TURKEY  
Contract Date : June 9, 2017  
Employer : Muğla Metropolitan Municipality  
Contractor : Imfalt Road Construction Inc.  
Scope of Contract : Restoration and Organizing  
Works





**First and Second Layer Surface Treatment and Bituminous Works and Construction of Bridges & Structures in Mugla Province Bodrum, Milas, Yatağan, Kavaklıdere, Menteşe Districts**

Project Location:	: Mugla, TURKEY
Contract Date	: April 21, 2017
Employer	: Muğla Metropolitan Municipality
Contractor	: Imfalt Road Construction Inc.
Scope of Contract	: Surface treatment Bituminous Works Cobble Stone Pavement Bridges & Structures





## Pavement Tiles in Various Streets of İskenderun

.....

Project Location:	: İskenderun, TURKEY
Contract Date	: July 29 ,2016
Employer	: İskenderun Municipality
Contractor	: Imfalt Road Construction Inc.
Scope of Contract	: Prefabricated concrete kerb units 8 cm / 6 cm prefabricated concrete paving blocks Plentmix base-subbase Binder layer





## Highway Repair and Maintenance Works in the Boundaries of Arsuz Municipality

.....

Project Location:	: Iskenderun, TURKEY
Contract Date	: December 6, 2016
Employer	: Arsuz Municipality
Contractor	: Imfalt Road Construction Inc.
Scope of Contract	: Prefabricated concrete kerb units 8 cm / 6 cm prefabricated concrete paving blocks Plentmix base-subbase Binder layer Maintenance and repair





**Base Material, Bituminous  
Works And Engineering  
Structures In Various  
Neighborhoods For  
Marmaris -Köyceğiz-Ortaca  
Roads Between  
125+000-178+000**

Project Location:	: Mugla , TURKEY
Contract Date	: March 21,2018
Employer	: General Directorate of Highways - 2.Regional Directorate İzmir
Contractor	: Imfalt Road Construction Inc.
Scope of Contract	: Earthworks Bridges & Structures Bituminous works





## Concrete Asphalt Pavement Works for Hatay Province Arsuz Districts

.....

**Project Location:** : Hatay , TURKEY  
**Employer** : Hatay Metropolitan  
Municipality  
**Contractor** : Imfalt Road Construction Inc.  
**Scope of Contract** : Concrete Asphalt Pavement  
Works

---





**Concrete Asphalt Pavement  
Works for Hatay Province  
Defne Districts**

.....

Project Location:	: Hatay , TURKEY
Employer	: Hatay Metropolitan Municipality
Contractor	: Imfalt Road Construction Inc.
Scope of Contract	: Concrete Asphalt Pavement Works

---





**Concrete Asphalt Pavement  
Works for Hatay Province  
Samandağ Districts**

.....

Project Location:	: Hatay , TURKEY
Employer	: Hatay Metropolitan Municipality
Contractor	: Imfalt Road Construction Inc.
Scope of Contract	: Concrete Asphalt Pavement Works

---





**Concrete Asphalt Pavement  
Works for Hatay Province  
Yayladağı Districts**

.....

Project Location:	: Hatay , TURKEY
Employer	: Hatay Metropolitan Municipality
Contractor	: Imfalt Road Construction Inc.
Scope of Contract	: Concrete Asphalt Pavement Works

---





**Concrete Asphalt Pavement  
Works for İskenderun Districts  
- 1.Regional**

.....

**Project Location:** : Hatay, TURKEY  
**Employer** : Hatay Metropolitan Municipality  
**Contractor** : Imfalt Road Construction Inc.  
**Scope of Contract** : Concrete Asphalt Pavement Works

---





## Construction and Maintenance of Asphalt Concrete Roads in Aydın Province and Various

Project Location:	: Aydın, TURKEY
Employer	: Aydın Metropolitan Municipality
Contractor	: Imfalt Road Construction Inc
Scope of Contract	: Bituminous works Placement-ramming works Maintenance and repair works





**Improvement of Highway  
Infrastructure and  
Bituminous Works and  
Maintenance of Aydin Cine  
Road (between Km: 0+000 -  
8+700)**

.....

**Project Location:** : Aydin, TURKEY  
**Employer** : General Directorate of  
Highways - 2. Regional  
Directorate Izmir  
**Contractor** : Imfalt Road Construction Inc  
**Scope of Contract** : Bituminous works  
Placement-ramming works  
Maintenance and repair  
works

---





**Asphalt Pavement Work  
for Various Roads of  
Samandağ-Defne Districts**

.....

**Project Location:** : Hatay, TURKEY  
**Employer** : Hatay Metropolitan Municipality  
**Contractor** : Imfalt Road Construction Inc  
**Scope of Contract** : Bituminous works  
Placement-ramming works

---





**Hatay Metropolitan  
Municipality Asphalt  
Pavement Works for  
Various Roads of Antakya  
District and Construction  
of Wearing Coat between  
Ataturk Street and  
Iskenderun Highway**

.....

Project Location: : Hatay, TURKEY  
Employer : Hatay Metropolitan Municipality  
Contractor : Imfalt Road Construction Inc  
Scope of Contract : Bituminous works  
Placement-ramming works

---





**Construction of Base,  
7 cm thick Binder Layer,  
5 cm thick Wearing Coat  
and Bituminous Works for  
İzmir-Torbalı District and  
Karakuyu-Ormankoy-  
Dagtekke Village Roads**

.....

Project Location:	: İzmir, TURKEY
Employer	: Torbalı District Governorate
Contractor	: İmfalt Road Construction Inc
Scope of Contract	: Bituminous works Placement-ramming works





**Modified Bituminous  
Pavement, Construction of  
Reinforced Structures and  
Placement-ramming Works  
for Various Streets and  
Boulevards in  
Ankara Districts**

.....

Project Location:	: Ankara, TURKEY
Employer	: Ankara Metropolitan Municipality
Contractor	: Sogut Construction
Scope of Contract	: Bituminous works with modified bitumen Bridges & Structures Placement-ramming work





**Municipality of Ankara  
Ankara-Samsun Highway - Asphalt Pavement Works**









**Improvement and  
Construction of Pavement  
for Highway and Access  
Roads within the  
Boundaries of  
2. Regional Directorate**

.....

**Project Location:** : Izmir, TURKEY  
**Employer** : General Directorate of  
Highways - 2. Regional  
Directorate Izmir  
**Contractor** : Arya-Imfalt JV  
**Scope of Contract** : Bituminous works  
Base-subbase material  
Placement-ramming Works  
Bridges & Structures





### **Asphalt Concrete (BHM Binder and Wearing Coat) Material Supply**

.....

**Project Location:** : Izmir, TURKEY  
**Employer** : İzbeton (İzmir Metropolitan Municipality)  
**Contractor** : Imfalt Road Construction Inc  
**Scope of Contract** : Bituminous material supply

---





**Earthworks, Reinforced  
Earth, Reinforced  
Structures and BHM  
Pavement Works for Mugla  
Province Ataturk Boulevard  
in between 0+000-1+290  
km**

Project Location:	: Mugla, TURKEY
Employer	: Mugla Metropolitan Municipality
Contractor	: Imfalt Road Construction Inc
Scope of Contract	: Earthworks Reinforced earth Bituminous works Plentmix base Bridges & Structures





## Bituminous Asphalt Pavement Works

.....

Project Location:	: Iskenderun, Türkiye
Employer	: Iskenderun Municipality
Contractor	: Imfalt Road Construction Inc
Scope of Contract	: Bituminous works Placement-ramming works Prefabricated concrete paving blocks Placement-ramming Works





**First and Second Layer  
Surface Treatment and  
Bituminous Works and  
Construction of Reinforced  
Structures in Various  
Neighborhoods of Mugla  
Province Milas and  
Yatagan Districts**

.....

Project Location:	: Mugla, TURKEY
Employer	: Mugla Metropolitan Municipality
Contractor	: Imfalt Road Construction Inc.
Scope of Contract	: 1st and 2nd layer surface treatment Bituminous works Bridges & Structure

---





**Base Material, Bituminous Works and Engineering Structures in Various Neighborhoods for Mugla Province Mentese, Marmaris, Datca, Ula, Kavaklidere ve Koycegiz**

.....

Project Location: : Mugla, TURKEY  
Employer : Mugla Metropolitan Municipality  
Contractor : Imfalt Road Construction Inc.  
Scope of Contract : Bituminous Works  
Base material  
Placement-ramming works

---



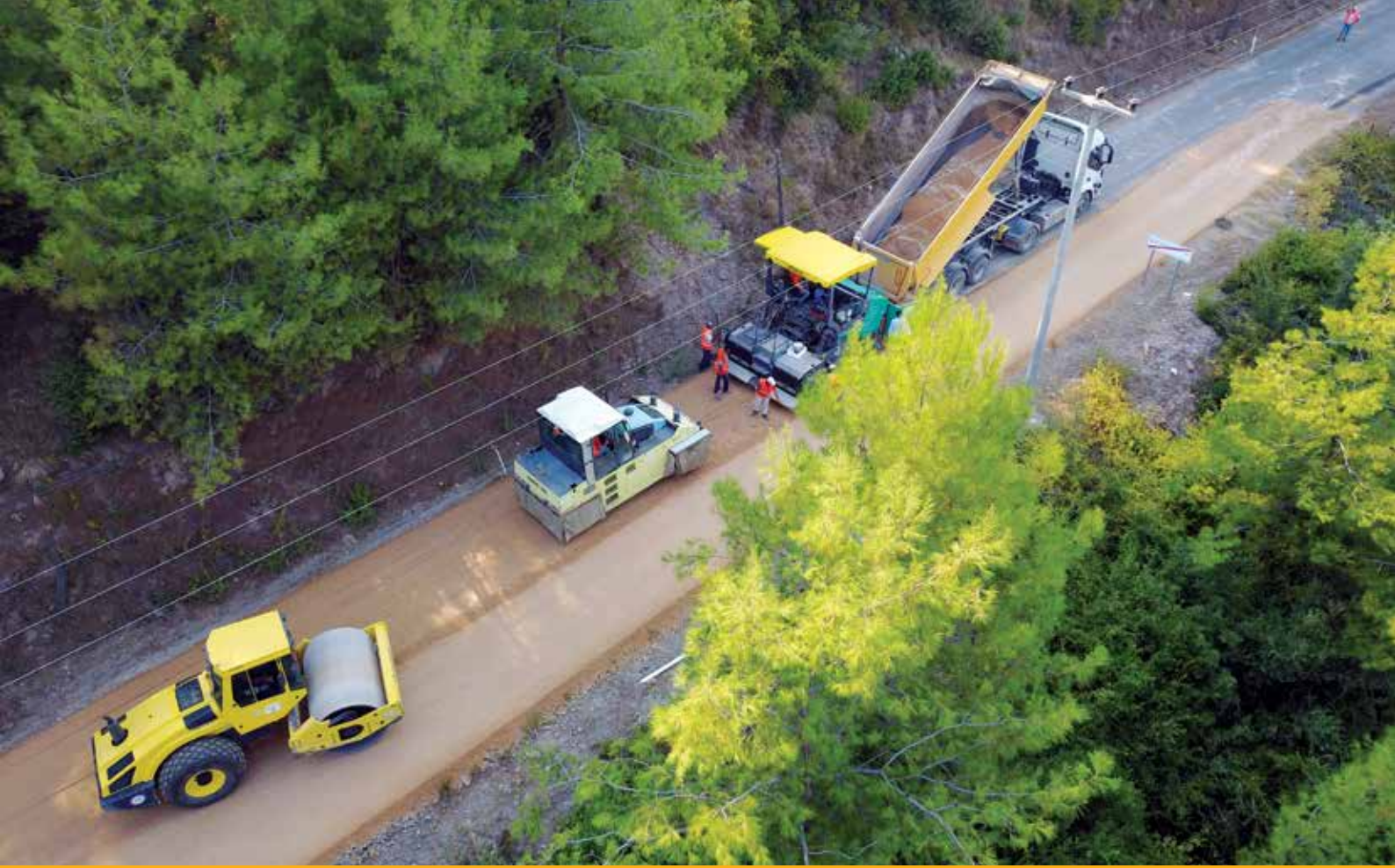


**Infrastructure Improvement  
and Bituminous Pavement  
Improvement in  
Derbent-Salihli-Kemaliye  
Distinction Road**

.....

Project Location:	: Manisa, TURKEY
Employer	: General Directorate of Highways - 2. Regional Directorate Izmir
Contractor	: Imfalt Road Construction Inc
Scope of Contract	: Earthworks Bridges & Structures Plentmix base-subbase material Bituminous works Placement-ramming works





### **Plentmix base-subbase material and Bituminous works for Kırıkkale Districts**

.....

<b>Project Location:</b>	: Kırıkkale, TURKEY
<b>Employer</b>	: Kırıkkale Provincial Directorate of Services to Provincial Villages
<b>Contractor</b>	: Imfalt Road Construction Inc
<b>Scope of Contract</b>	: Plentmix base-subbase material Bituminous works Placement-ramming works

---





## **Bituminous Asphalt Pavement Works for Antakya Organize Industrial Zone**

.....

<b>Project Location:</b>	: Hatay, TURKEY
<b>Employer</b>	: Hatay Büyükşehir Municipality Support Services Department
<b>Contractor</b>	: Imfalt Road Construction Inc
<b>Scope of Contract</b>	: Plentmix base-subbase material Bituminous works Placement-ramming works

---





**Taxiway - Apron - Heliport  
Pavement in Kabul  
Afghanistan International  
Airport**

.....

Project Location: : Kabul, AFGHANISTAN  
Employer : Ahmet Aydeniz Construction  
(Nato Namsa)  
Contractor : Imay Construction  
Scope of Contract : Taxiway, apron and heliport  
pavement

---





## **Construction of Waddan-Sebha-Soukna State Highway in Libya**

.....

**Project Location:** : Libya  
**Employer** : Metis Construction  
**Contractor** : Imay Construction  
**Scope of Contract** : Earthworks  
Reinforced structures  
Bituminous works  
Placement-ramming Works

---





**Asphalt Pavement for  
Prince Mohammed Bin  
Abdulaziz International  
Airport in Madinah  
Al-Munawarah, KSA**

.....

Project Location: : Madinah-Al-Munawarah, KSA  
Employer : Tav-Yenigun JV  
Contractor : Imay Construction  
Scope of Contract : Bituminous works  
Placement-ramming Works

---





## Construction of Kandehar Airbase Runway

.....

Project Location: : Kandehar, AFGHANISTAN  
Employer : Yenigun Construction  
Contractor : Imay Construction  
Scope of Contract : Bituminous works  
Placement-ramming Works

---





## Constuction of Ramp in Cidde Airport

.....

Project Location: : Cidde, SAUDI ARABIA  
Employer : Tav Construction - Yenigün JV  
Contractor : Imay Construction  
Scope of Contract : Bituminous works  
Placement-ramming Works

---





**Ministry of Transportation, General Directorate of Highways  
Derbent-Salihli-Kemaliye Highway - Pavement and Infrastructure Works**













# Quality Certificates





Uluslararası Belgelendirme & Denetim Ltd. Şti.  
International Certification & Auditing Co. Ltd.

## CERTIFICATE

Certificate No  
**01.10123**

**İMFALT YOL YAPI SANAYİ TİCARET A.Ş.**

KIR. MAH. SEMT KARAGÖL MEVKİİ KM EVLERİ NO:1  
MENEMEN/ İZMİR

This document is to certify that the Quality  
Management System of the above mentioned organization has been assessed  
by CTR International Certification and Auditing Co. Ltd. and  
registered for the below mentioned standard:

## ISO 9001:2015

The scope of the certification is as follows:

**CONSTRUCTION OF MOTORWAY, HIGHWAYS,  
URBAN ROADS AND OTHER VEHICLE WAYS OR SIDEWALKS**

Certification Date: 20.08.2014

Renewal Date: 18.08.2021

Expiration Date: 19.08.2022

**GENERAL MANAGER**  
CTR Certification Co. Ltd.



TÜRKAK B05 NO  
YS-1057-7150



This document is valid for 3 years, on the condition that the system  
efficiency is maintained and the surveillance audits are performed on time.  
The validation status of the document might be viewed at [www.ctr.com.tr](http://www.ctr.com.tr)  
or by scanning the QR code.

The right of property of this document belongs to CTR International  
Certification and Auditing Co. Ltd. and it must be returned upon request.

Başı Bulvarı ATB İş Merkezi G Blok No.160 Macunköy,  
Yenimahalle / Ankara / Turkey  
Tel: +90 312 397 82 00 Fax: +90 312 397 82 10





Uluslararası Belgelendirme & Denetim Ltd. Şti.  
International Certification & Auditing Co. Ltd.

## CERTIFICATE

Certificate No  
**02.10086**

**İMFALT YOL YAPI SANAYİ TİCARET A.Ş.**

KIR MAH. SEMT KARAGÖL MEVKİİ KM EVLERİ NO:1  
MENEMEN/ İZMİR

This document is to certify that the Environmental  
Management System of the above mentioned organization has been assessed  
by CTR International Certification and Auditing Co. Ltd. and  
registered for the below mentioned standard:

# ISO 14001:2015

The scope of the certification is as follows:

**CONSTRUCTION OF MOTORWAY, HIGHWAYS,  
URBAN ROADS AND OTHER VEHICLE WAYS OR SIDEWALKS**

Certification Date: 20.08.2014

Renewal Date: 18.08.2021

Expiration Date: 19.08.2022

**GENERAL MANAGER**  
CTR Certification Co. Ltd.



TÜRKAK BDS NO  
YS-EE68-8C4C



This document is valid for 3 years; on the condition that the system  
efficiency is maintained and the surveillance audits are performed on time.  
The validation status of the document might be viewed at [www.ctr.com.tr](http://www.ctr.com.tr)  
or by scanning the QR code.

The right of property of this document belongs to CTR International  
Certification and Auditing Co. Ltd. and it must be returned upon request.

Başı Bulvarı ATB İş Merkezi G Blok No.160 Macunköy,  
Yenimahalle / Ankara / Turkey  
Tel: +90 312 397 82 00 Fax: +90 312 397 82 10





Uluslararası Belgelendirme & Denetim Ltd. Şti.  
International Certification & Auditing Co. Ltd.

## CERTIFICATE

Certificate No  
**17.10092**

**İMFALT YOL YAPI SANAYİ TİCARET A.Ş.**

KIR MAH. SEMT KARAGÖL MEVKİİ KM EVLERİ NO:1  
MENEMEN/ İZMİR

This document is to certify that the Occupational Health and Safety Management System of the above mentioned organization has been assessed by CTR International Certification and Auditing Co. Ltd. and registered for the below mentioned standard:

## ISO 45001:2018

The scope of the certification is as follows:

**CONSTRUCTION OF MOTORWAY, HIGHWAYS,  
URBAN ROADS AND OTHER VEHICLE WAYS OR SIDEWALKS**

Certification Date: --

Renewal Date: **18.08.2021**

Expiration Date: **19.08.2022**

**GENERAL MANAGER**  
CTR Certification Co. Ltd.



This document is valid for 3 years; on the condition that the system efficiency is maintained and the surveillance audits are performed on time. The validation status of the document might be viewed at [www.ctr.com.tr](http://www.ctr.com.tr). The right of property of this document belongs to CTR International Certification and Auditing Co. Ltd. and it must be returned upon request.

Başı Bulvarı ATB İş Merkezi G Blok No.160 Macunköy,  
Yenimahalle / Ankara / Turkey  
Tel: +90 312 397 82 00 Fax: +90 312 397 82 10





[www.imfaltyol.com](http://www.imfaltyol.com)



**Merkez / Headquarter**

Kır Mahallesi Küme Evleri No: 1

Menemen / İZMİR / TÜRKİYE

**Telefon / Phone:** +90 (232) 843 87 87

**İstanbul Şube / İstanbul Branch**

Eyüpsultan Mah. İbnisina Cad. No:8

Samandıra Sancaktepe / İSTANBUL / TÜRKİYE

**Telefon / Phone:** +90 (216) 311 69 69

**Ankara Şube / Ankara Branch**

İlkbahar Mah. Medine Müdafii Caddesi 607. Sokak No: 24

Çankaya / ANKARA / TÜRKİYE

**Telefon / Phone:** +90 (312) 374 33 83

**Romanya Şube / Romania Branch**

Strada C. A. Rosetti, nr 47, Parter, Sector 2, 020013

BUCURESTI / ROMANIA

**Telefon / Phone:** + 40 314 252 691